

# State of Wyoming Corner Record

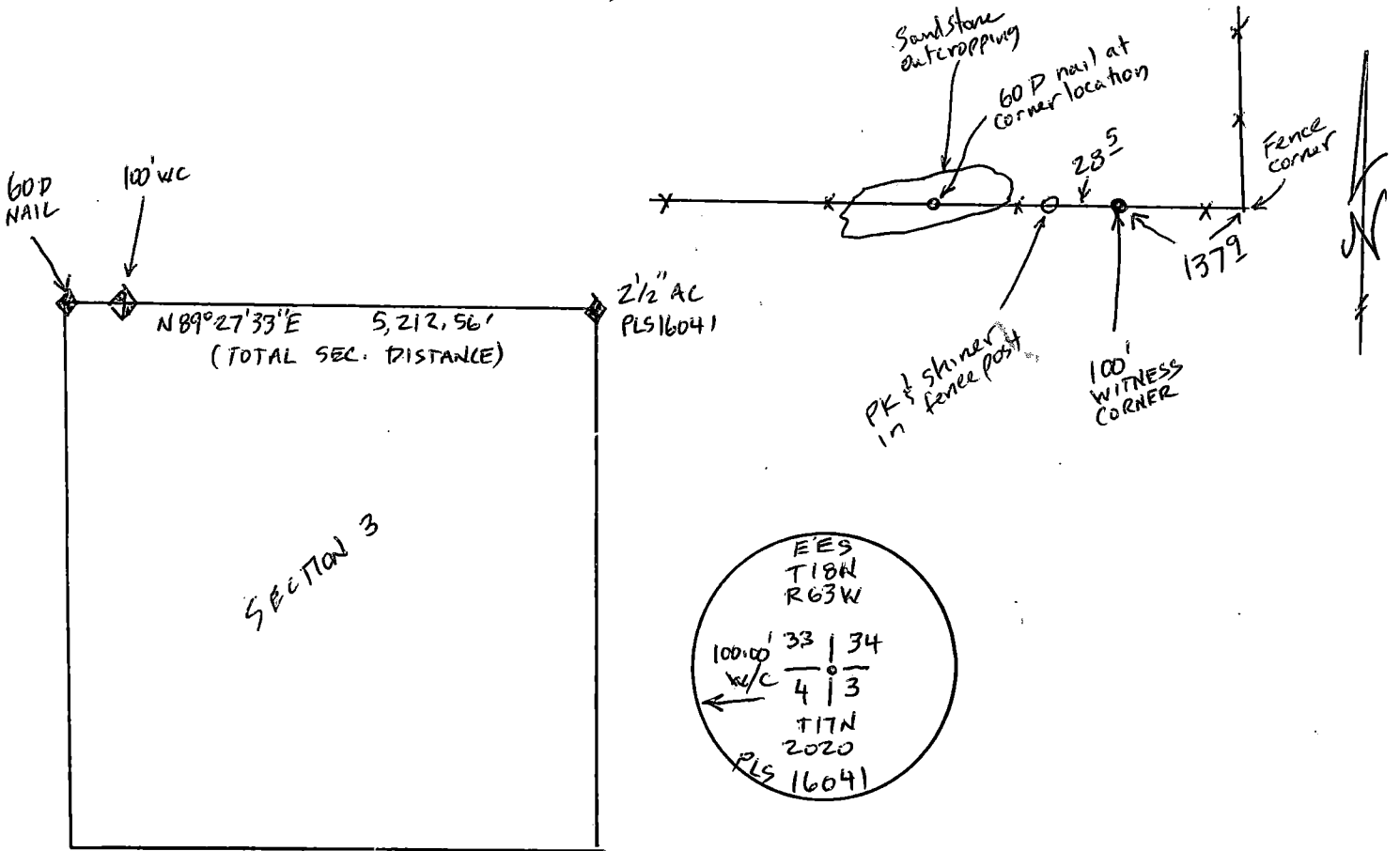
(In compliance with the *CORNER PERPETUATION AND FILING ACT*, Wyoming Statutes, 1997, Section 33-29-140, et seq., and the Rules and Regulations of the Board of Registration for Professional Engineers and Professional Land Surveyors)

Reverse side of this form may be used if more space is needed.

Record of original survey and citation of source of historical information (if corner is lost or obliterated). Description of corner monumentation evidence found and/or monument and accessories established to perpetuate the location of this corner. Sketch of relative location of monument, accessories, and reference points with course and distance to adjacent corner(s) (if determined in this survey). Method and rationale for reestablishment of lost or obliterated corner.

Nothing Found -

Set a 60D nail in Sandstone outcropping at corner location -  
 Set a #6 rebar with 3/4" Aluminum Cap PLS 16041 at 100' East witness corner location (set on section line)



NOT FOUND



RECP #: 802542  
 RECORDED 2/22/2021 AT 9:49 AM BK# 2720 PG# 1746  
 Debra K. Lee, CLERK OF LARAMIE COUNTY, WY PAGE 1 OF 1

Date of Field Work: 3-27-2020 Office Reference: Job #61927

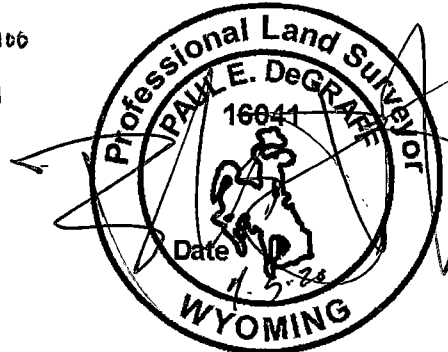
### CROSS INDEX DIAGRAM

1	2	3	4	5	6	7	8	9	10	11	12	13	14	15	16	17	18	19	20	21	22	23	24	25	
A																									A
B																									B
C																									C
D																									D
E																									E
F																									F
G																									G
H																									H
J																									J
K																									K
L																									L
M																									M
N																									N
O																									O
P																									P
Q																									Q
R																									R
S																									S
T																									T
U																									U
V																									V
W																									W
X																									X
Y																									Y
Z																									Z

Land Surveyor / Firm / Address  
Paul E DeGraff  
Encompass Energy Services  
10901 W. 120th AVE #400  
Broomfield CO 80021

This corner record was prepared by me or under my direction and supervision.  
 SEAL & SIGNATURE

Laramie County



Corner Name: NW 3 Section: 3 T 17N R 63W 6th P.M. Cross-Index No.: 13 A  
 SBRPEPLS/PLSW: March 1994; PLSW January 1998